

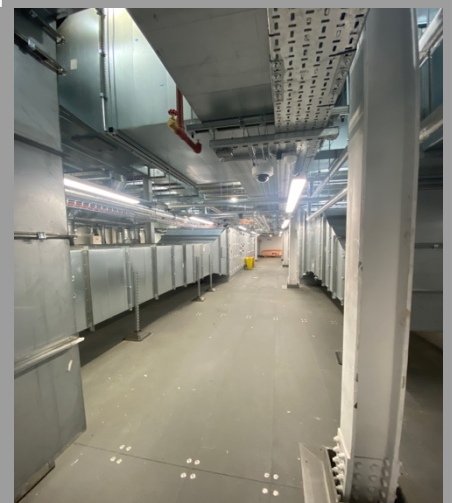


This Project was Design and Build of a brand-new full HVAC AHU Electrical installation with vast amounts of value engineering to meet and exceed client expectations within a tight timeframe. This project consisted of new Submain cabling from Local Power centre, Containment, 630A MCC Panel Boards, 250A TP+N Distribution boards and 1200M of Cabling in-between distribution and AHU Isolation points. The AHUs provided by client were made and assembled off site, once on site to meet new client requirements Abbey Electrical had to adapt the supplied AHUs to suit. All works were coordinated between Abbey Electrical on-site Project Manager and Principal contractor to ensure the client relationship is kept to a consistent high standard and to ensure a smooth and efficient install.

**HVAC MCC & Power  
Supplies installation**

**Category of Job:  
Pharmaceutical**

**Contract Value:  
£35,000**



**Abbey Group Services | Unit 58, Shrivenham Hundred Business Park | SN6 8TY**

**t** 01793 780088    **e** [enquiries@abbeygroupservices.com](mailto:enquiries@abbeygroupservices.com)    **w** [abbeygroupservices.com](http://abbeygroupservices.com)